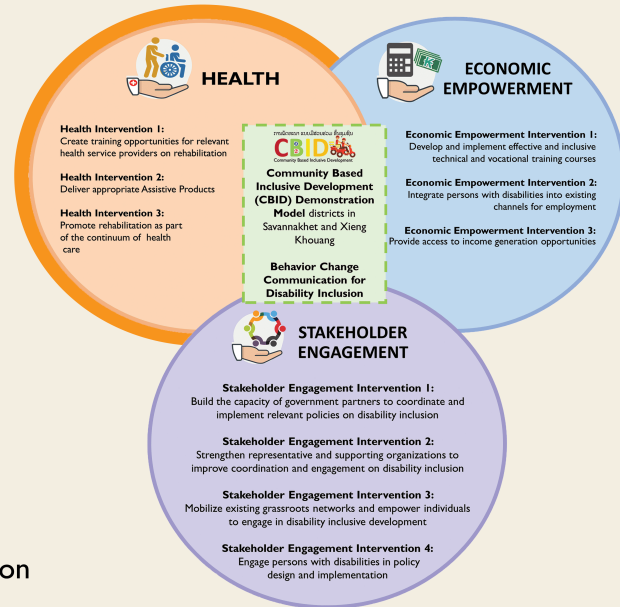


Gender and Inclusion in the Health Component of USAID Okard

Expected Result - Increased number of persons with disabilities and their households with improved health and improved economic self-sufficiency

Health Component I: Increased utilization of health and related rehabilitation services for persons with disabilities and their households

Health Result 1.1 Improved ability of health system to provide quality health and related rehabilitation



Development of GIDAP

Priority Issues

Access to health and related rehabilitation services

- Lack of female healthcare providers
- Low-level knowledge on disability and gender
- Vulnerable groups experience negative attitudes and discrimination

Mitigation action

Provision of 'Women Centered Care' (WCC)

Develop curriculum on approaches, guidelines and protocols on WCC for provision of health and related rehabilitation services (under MoH sub-grant)



Linking GIDAP and MEL

Indicator: H11.1

Number of service delivery systems with improved capacity to provide women centered care

Indicator Reference Sheet (IRS)

- Definition of women centered care
- Target MoH facilities
- Characteristics of service delivery system to provide WCC
- Data collection process and tools to audit MoH facilities



Learning question (AMEL Plan and Collaborating, Learning and Adapting (CLA))
Are enabling conditions in place to support women centered care?

Learning activities

- Analysis of women centered care best practices in other contexts
- **Focus group discussions to explore healthcare experiences of women with disabilities and their expectations on best practice for WCC**
- Healthcare facility audits to measure level of performance to provide WCC

